



**Vendor: Cisco**

**Exam Code: 200-355**

**Exam Name: Implementing Cisco Wireless Network  
Fundamentals (WIFUND)**

**Version: Demo**

**QUESTION 1**

Which two attributes must be configured to match in order for WLCs to operate in the same mobility group? (Choose two.)

- A. mobility domain name
- B. virtual IP address
- C. service interface address
- D. hardware model
- E. software version

**Correct Answer:** AB

**QUESTION 2**

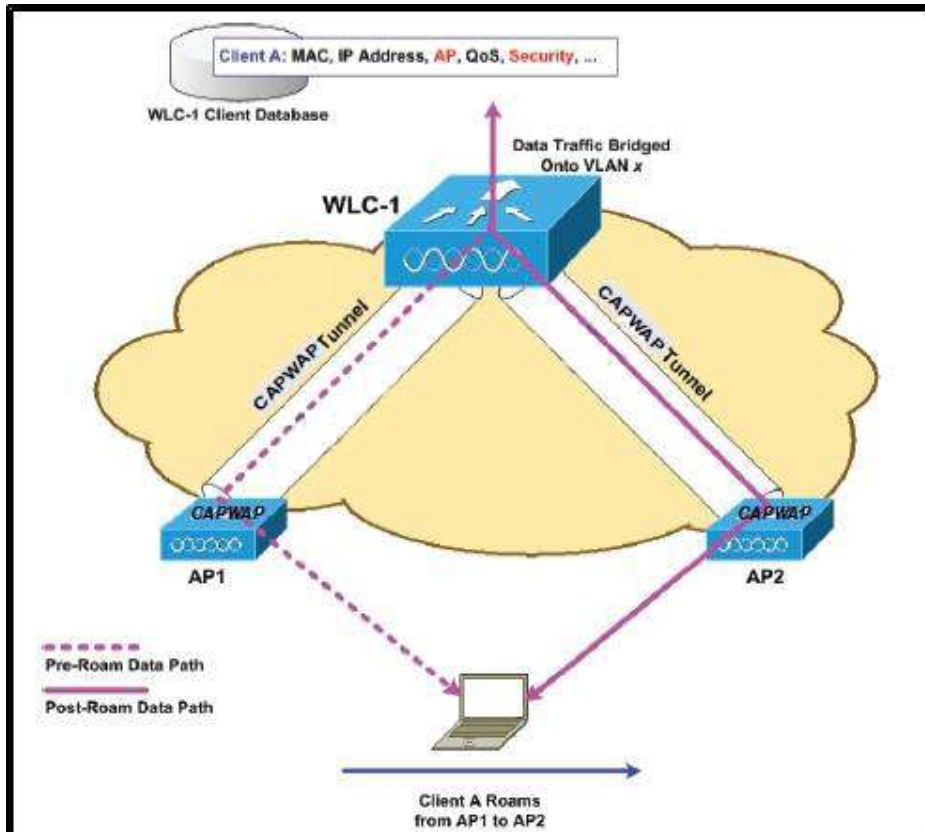
Which operating mode is valid for controllers in a converged access architecture?

- A. switch peer groups
- B. mobility controller
- C. auto-anchor
- D. foreign anchor

**Correct Answer:** B

**QUESTION 3**

Refer to the exhibit. Which two wireless functions is the client experiencing? (Choose two.)



- A. Inter-controller Roaming
- B. Intra-controller Roaming
- C. Layer 2 Roaming
- D. Layer 3 Roaming
- E. Inter-subnet roaming
- F. Re-authentication

**Correct Answer:** BC

**QUESTION 4**

An engineer wants to deploy a 2504 controller as the anchor controller for a guest WLAN that resides on a 5508 controller in a different mobility group. What configuration change must be applied to support this deployment strategy?

- A. UDP 16666 and IP Protocol 97 must be enabled on the 2504 controller
- B. UDP 5246 and TCP Protocol 97 must be enabled on the router
- C. The 2504 controller must be added to the same mobility group as the 5508.
- D. DHCP Option 43 must be added to the neighboring switchport

**Correct Answer:** C

**QUESTION 5**

Which interface is used to connect the foreign and anchor controllers?

- A. management
- B. service
- C. virtual
- D. dynamic

**Correct Answer:** A

**QUESTION 6**

A customer has a corporate SSID that is configured to authenticate against an ACS server to validate client credentials on the corporate SSID. The customer has a firewall logically positioned on the network between the WLC and the ACS server in the network architecture. Which port must the firewall allow to ensure that authentication can occur?

- A. 43
- B. 1812
- C. 5146
- D. 8143

**Correct Answer:** B

### QUESTION 7

During an upgrade, the wireless infrastructure has seen a few access points join and then drop off the network. After further investigation, it appears the access points may have an IOS code version that is causing issues. Where in the controller is this information found?

- A. GUI > Wireless > Access Point > General
- B. CLI > show ap image all
- C. GUI > Monitor > Software Version
- D. CLI > show sysinfo

**Correct Answer: A**

### QUESTION 8

Refer to the exhibit. An engineer is configuring a SSID to utilize the management interface on the WLC. The management interface is configured with an untagged VLAN in the wireless controller interface settings. The controller is connected to a neighboring switch via the interface shown in the diagram. Which VLAN will traffic coming from the newly created SSID use to traverse the wired network?

```
interface GigabitEthernet2/1
  no ip address
  switchport
  switchport trunk encapsulation dot1q
  switchport trunk allowed vlan 1,5,15,20,25,30,35,40,45,50,55,100
  switchport trunk native vlan 44
  switchport mode trunk
end
```

- A. 1
- B. 20
- C. 44
- D. 50

**Correct Answer: C**

### QUESTION 9

Microsoft Active Directory integrated machines are not authenticating to the internal WLAN. The WLAN settings are WPA2-AES-802.1x and are authenticating to a Cisco Identity Services Engine server. You investigate and note that non-domain authenticated machines are properly authenticating to the WLAN using their Active Directory credentials. Why would this problem occur?

- A. The WLAN is configured improperly in group policy.
- B. The ACS server is not joined to the domain, causing authentications to fail.
- C. The domain machines are configured to disable the wireless adapter.
- D. The non-domain machines are using local accounts that are not authenticated through the domain.

**Correct Answer: A**

**QUESTION 10**

Mac OS X machines are having issues accessing the wireless network. While working with TAC, the administrator is asked to find the Mac laptop's wireless adapter model and driver. Where should the administrator look to find this information?

- A. About This Mac > System Report
- B. Control Panel > System
- C. System Preferences > Network > Wi-Fi Adapter > Advanced
- D. Control Panel > Networking > Adapters > Properties

**Correct Answer:** A

**QUESTION 11**

An engineer is trying to determine from the controller CLI whether or not Telnet is enabled on the wireless controller. Which command can be entered to display this information?

- A. show network summary
- B. show aaa auth
- C. show radius summary
- D. show ldap statistics

**Correct Answer:** A

**QUESTION 12**

An engineer is trying to identify if radar has impacted the wireless network at a customer site. When using the controller GUI, which dashboard in the Monitor section presents this information?

- A. 802.11a/n - Air Quality Reports
- B. Clean Air - Worst Air Quality Report
- C. 802.11b/g/n - Interfering Devices
- D. Statistics - Mobility Statistics

**Correct Answer:** A

**QUESTION 13**

An engineer is using a predictive survey tool to estimate placement of APs in a carpeted office space. Most interior walls should be assigned which attenuation value?

- A. 2 dB
- B. 3 dB
- C. 4 dB
- D. 5 dB

**Correct Answer:** B

**QUESTION 14**

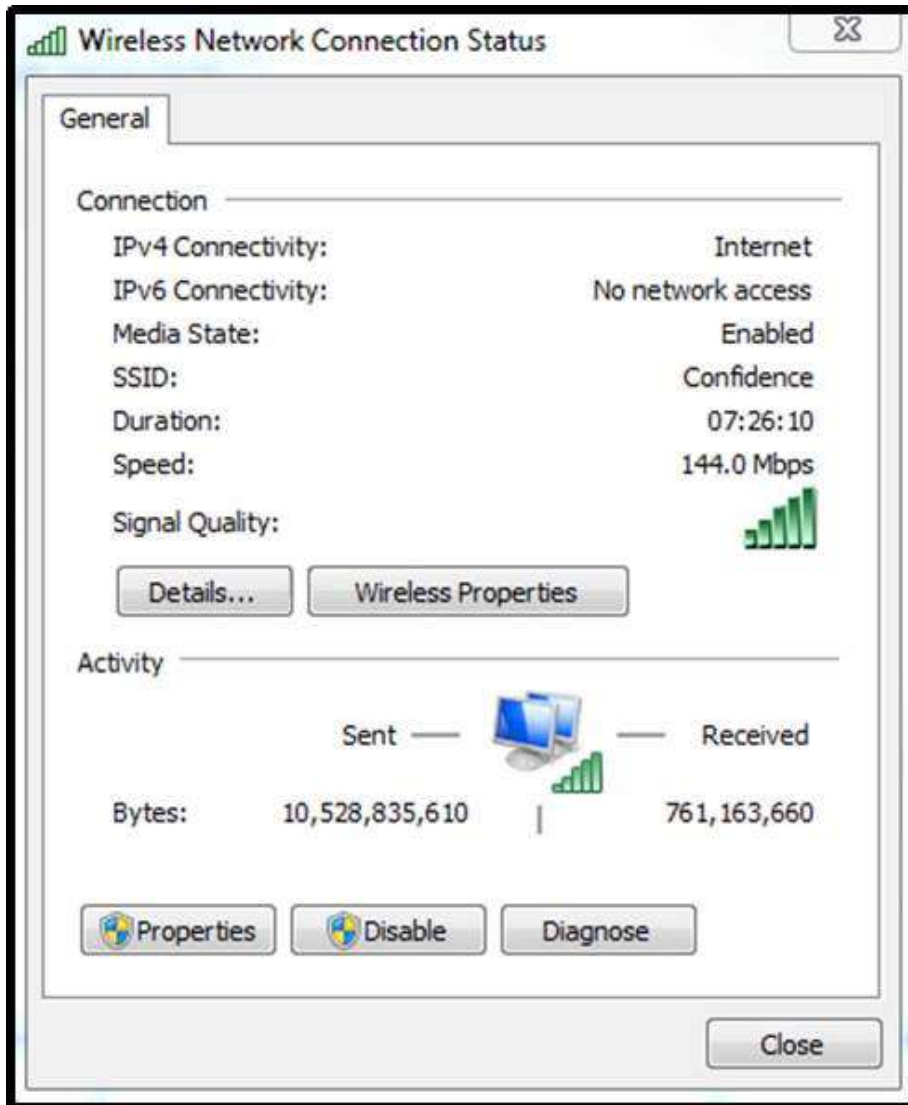
An engineer is conducting an active survey for indoor coverage in a warehouse. The warehouse has long aisles with racks that extend to the ceiling. Which antenna type has a radiation pattern that is suited to provide coverage in each aisle?

- A. Yagi
- B. patch
- C. omnidirectional
- D. dipole

**Correct Answer: B**

**QUESTION 15**

Refer to the exhibit. A customer is determining whether a Windows 7 laptop is operating on the correct IEEE 802.11 standard. Which standard is being used by the laptop in the exhibit?



- A. 802.11b

- B. 802.11g
- C. 802.11n
- D. 802.11p

**Correct Answer: C**

**QUESTION 16**

Following the deployment of a wireless network for data and voice services, an engineer is to validate the coverage. Which type of survey is required to ensure coverage?

- A. passive
- B. active
- C. fingerprinting
- D. calibrating

**Correct Answer: A**

**QUESTION 17**

During the deployment of a wireless network for data and location services, an engineer is to fine-tune the location services. What is this type of survey called?

- A. passive fingerprinting
- B. passive calibrating
- C. active fingerprinting
- D. active calibrating

**Correct Answer: A**

**QUESTION 18**

Which two services require an RToWLAN design? (Choose two.)

- A. WVoIP
- B. video conferencing
- C. multicast video
- D. Telnet
- E. SSH

**Correct Answer: AB**