



Vendor: Cisco

Exam Code: 200-901

**Exam Name: Developing Applications and Automating
Workflows using Cisco Core Platforms (DEVASC)**

Version: 13.02

Q & As: 160

QUESTION 1

Which statement describes the benefit of using functions in programming?

- A. Functions allow problems to be split into simpler, smaller groups, and reduce code repetition, which makes the code easier to read.
- B. Functions ensure that a developer understands the inner logic contained before using them as part of a script or application.
- C. Functions create the implementation of secret and encrypted algorithms.
- D. Functions store mutable values within a script or application.

Correct Answer: A

QUESTION 2

Which two statements describe the role of an artifact repository in a CI/CD pipeline? (Choose two.)

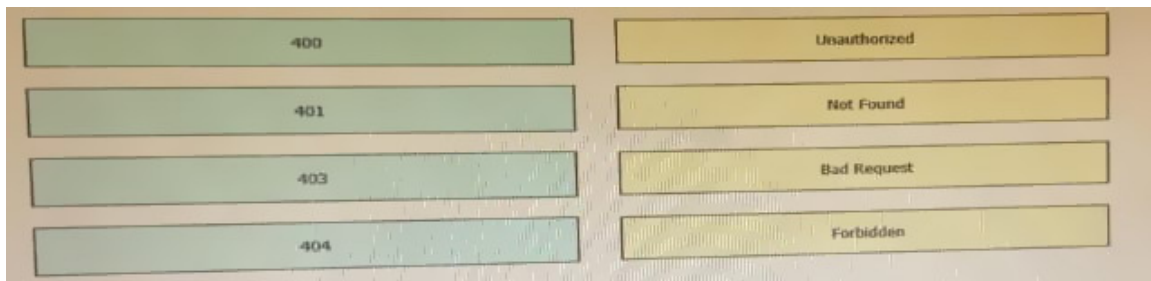
- A. An artifact repository allows to compare and merge changes in the source code of files involved in a build process.
- B. An artifact repository is needed only for CI/CD pipeline executed on a public cloud infrastructure.
- C. An artifact repository provides traceability, search, and management of binary files.
- D. An artifact repository is needed only for managing open source software.
- E. An artifact repository stores files needed and generated during the build process.

Correct Answer: CE

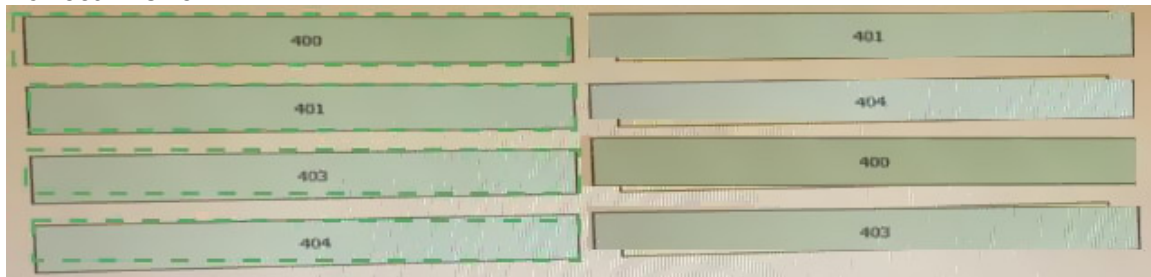
QUESTION 3

DRAG DROP

Drag and drop the HTTP status codes from the left onto the correct descriptions on the right.



Correct Answer:



QUESTION 4

Which product provides network controller-level management features?

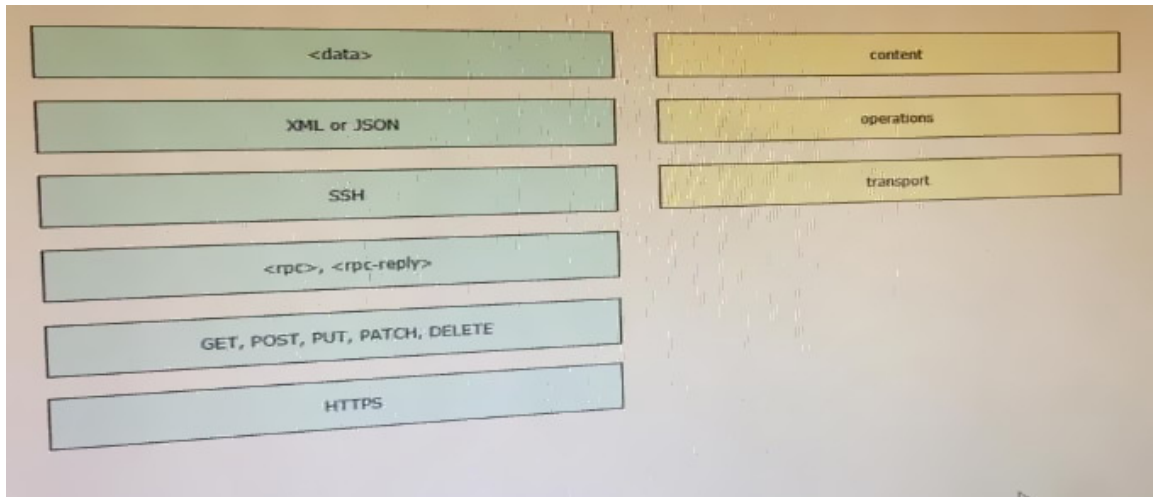
- A. Cisco DNA Center
- B. Cisco NX-OS
- C. Cisco UCS Manager
- D. Cisco ISE

Correct Answer: A

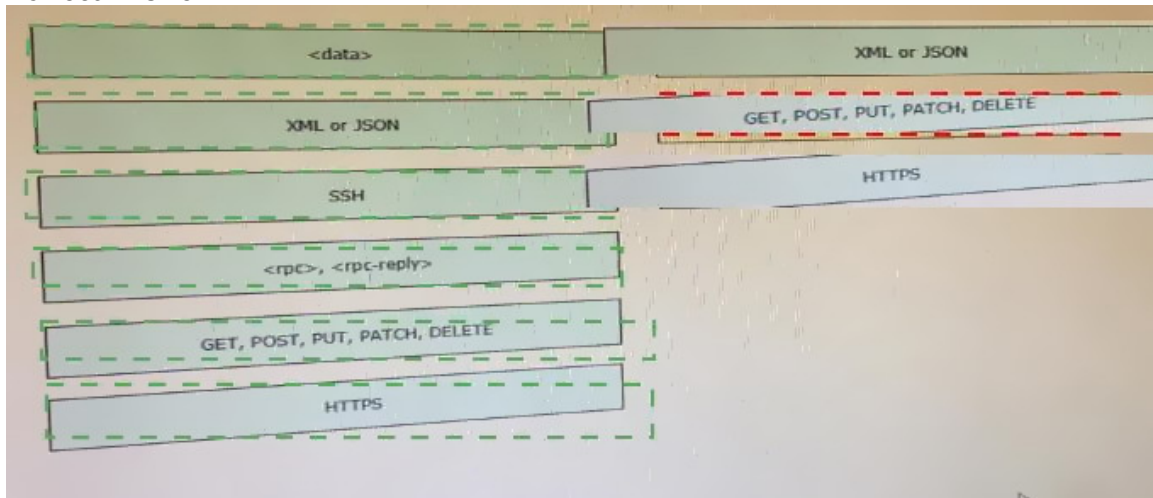
QUESTION 5

DRAG DROP

Drag and drop elements of the RESTCONF protocol stack from the left onto the correct description on the right. Not all elements on the left are used.



Correct Answer:



QUESTION 6

Which two items are Cisco DevNet resources? (Choose two.)

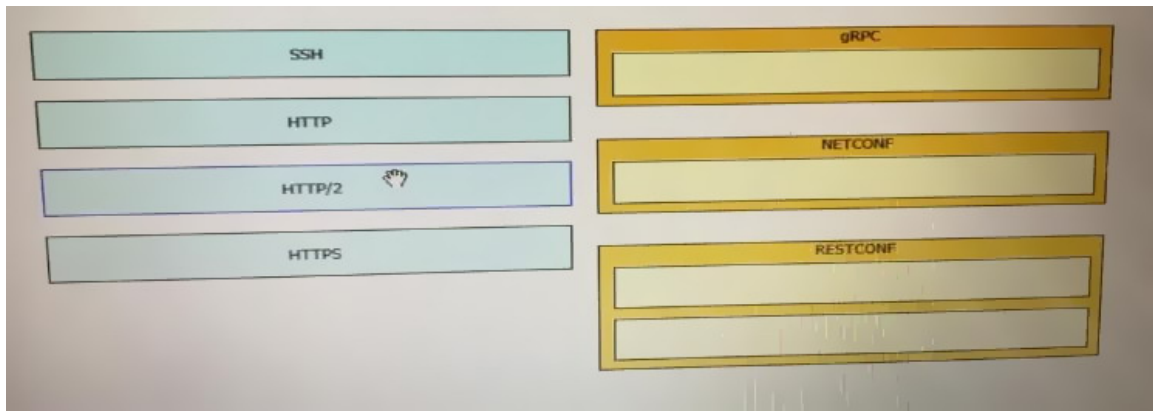
- A. TAC support
- B. Bitbucket
- C. Sandbox
- D. Software research
- E. API Documentation

Correct Answer: CE

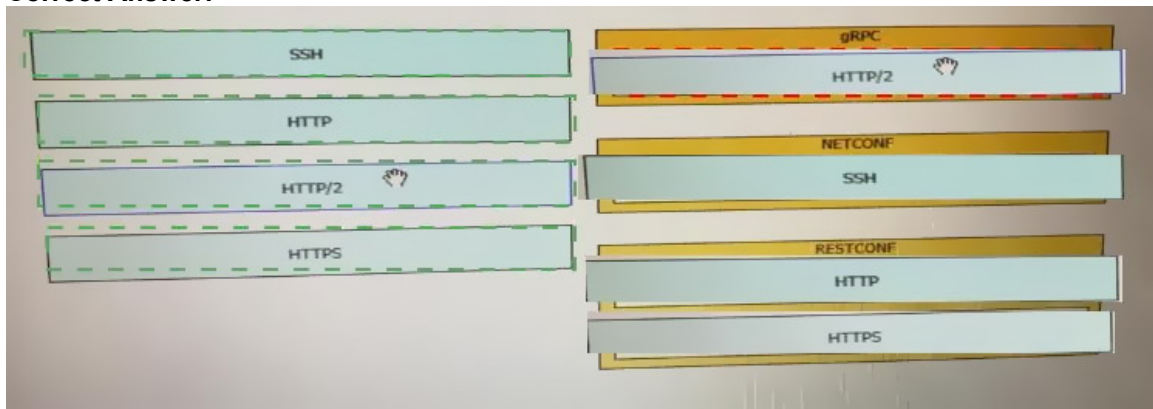
QUESTION 7

DRAG DROP

Drag and drop the network automation interfaces from the left onto the transport protocols that they support on the right.



Correct Answer:



QUESTION 8

DRAG DROP