



Vendor: Cisco

Exam Code: 350-901

**Exam Name: Developing Applications using Cisco Core
Platforms and APIs (DEVCOR)**

Version: 13.01

Q & As: 93

QUESTION 1

Where should distributed load balancing occur in a horizontally scalable architecture?

- A. firewall-side/policy load balancing
- B. network-side/central load balancing
- C. service-side/remote load balancing
- D. client-side/local load balancing

Correct Answer: B

QUESTION 2

A cloud native project is being worked on in which all source code and dependencies are written in Python, Ruby, and/or JavaScript. A change in code triggers a notification to the CI/CD tool to run the CI/CD pipeline. Which step should be omitted from the pipeline?

- A. Deploy the code to one or more environments, such as staging and/or production.
- B. Build one of more containers that package up code and all its dependencies.
- C. Compile code.
- D. Run automated tests to validate the correctness.

Correct Answer: A

QUESTION 3

A heterogeneous network of vendors and device types needs automating for better efficiency and to enable future automated testing. The network consists of switches, routers, firewalls and load balancers from different vendors, however they all support the NETCONF/RESTCONF configuration standards and the YAML models with every feature the business requires. The business is looking for a buy versus build solution because they cannot dedicate engineering resources, and they need configuration diff and rollback functionality from day 1. Which configuration management for automation tooling is needed for this solution?

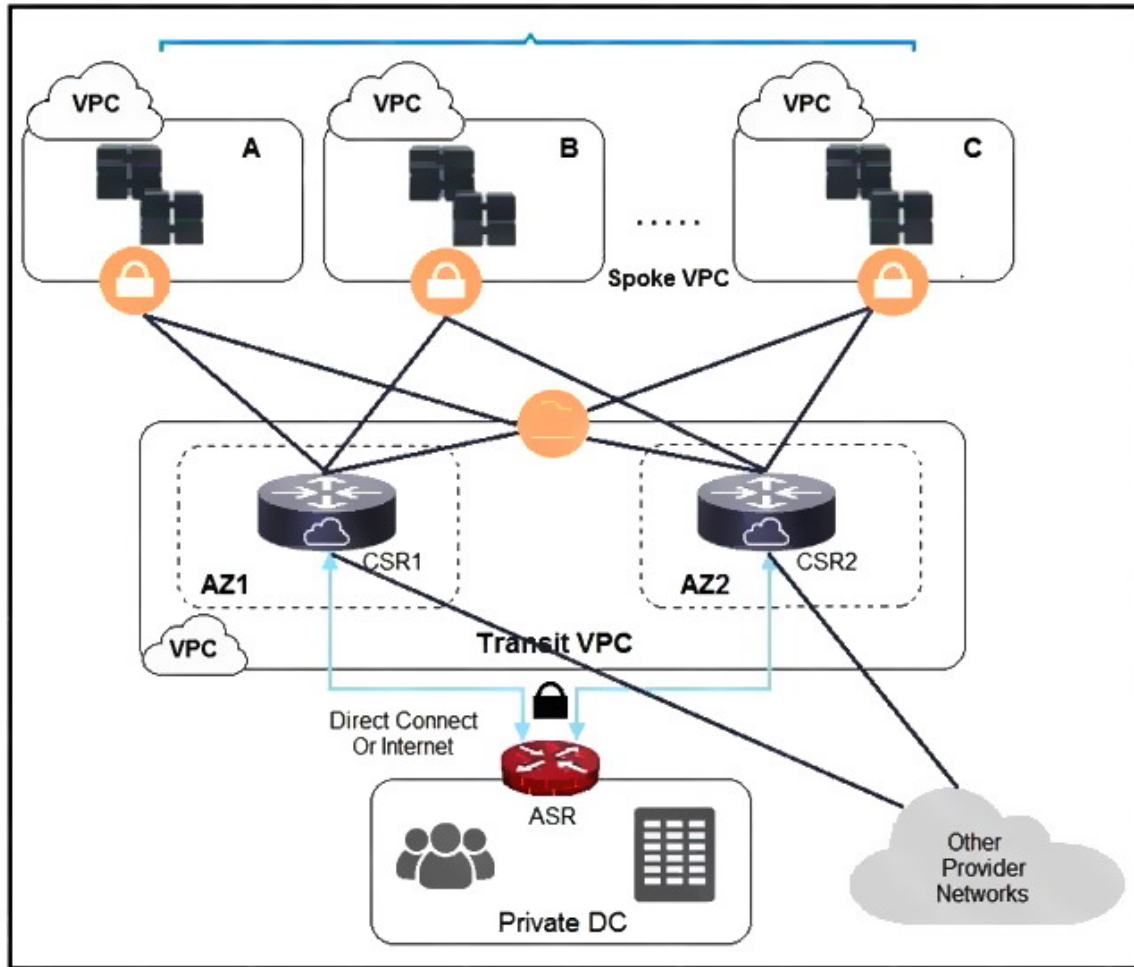
- A. Ansible
- B. Ansible and Terraform
- C. NSO
- D. Terraform
- E. Ansible and NSO

Correct Answer: E

QUESTION 4

Refer to the exhibit. A company has extended networking from the data center to the cloud

through Transit VPC. Which two statements describe the benefits of this approach? (Choose two.)



- A. Dynamic routing combined with multi-AZ- deployment creates a robust network infrastructure.
- B. VPC virtual gateways provide highly available connections to virtual networks.
- C. Dedicated VPC simplifies load balancing by combining internal and external web services.
- D. VPC virtual gateways provide more secure connections to virtual networks.
- E. Dedicated VPC simplifies routing by not combining this service with other shared services.

Correct Answer: BD

QUESTION 5

Refer to the exhibit. This script uses ciscoyang to configure two VRF instances on a Cisco IOS-XR device using the Yang NETCONF type. Which two words are required to complete the script?

(Choose two.)

```

node 'default' {
  cisco_yang_netconf { 'my-config' :
    target => '<vrf xmlns='http://cisco.com/ns/yang/Cisco-IOS-XR-infra-rsi-cfg"/>' ,
    source => '<vrf xmlns='http://cisco.com/ns/yang/Cisco-IOS-XR-infra-rsi-cfg"'
      <vrf>
        <vrf-name>VOIP</vrf-name>
        <create/>
        <description>Voice over IP</description>
        <vpn-id>
          <vpn-oui>875</vpn-oui>
          <vpn-index>3</vpn-index>
        </vpn-id>
      </vrf>
      <vrf>
        <vrf-name>INTERNET</vrf-name>
        <create/>
        <description>Generic external traffic</description>
        <vpn-id>
          <vpn-oui>875</vpn-oui>
          <vpn-index>22</vpn-index>
        </vpn-id>
      </vrf>
    </vrf>
  }
  mode => ,
  force => ,
}
--

```

- A. ensure
- B. commit
- C. false
- D. replace
- E. none

Correct Answer: CD

QUESTION 6

DRAG DROP

Drag and drop the characteristics from the left onto the correct data processing techniques on the right, in the context of GDPR.